

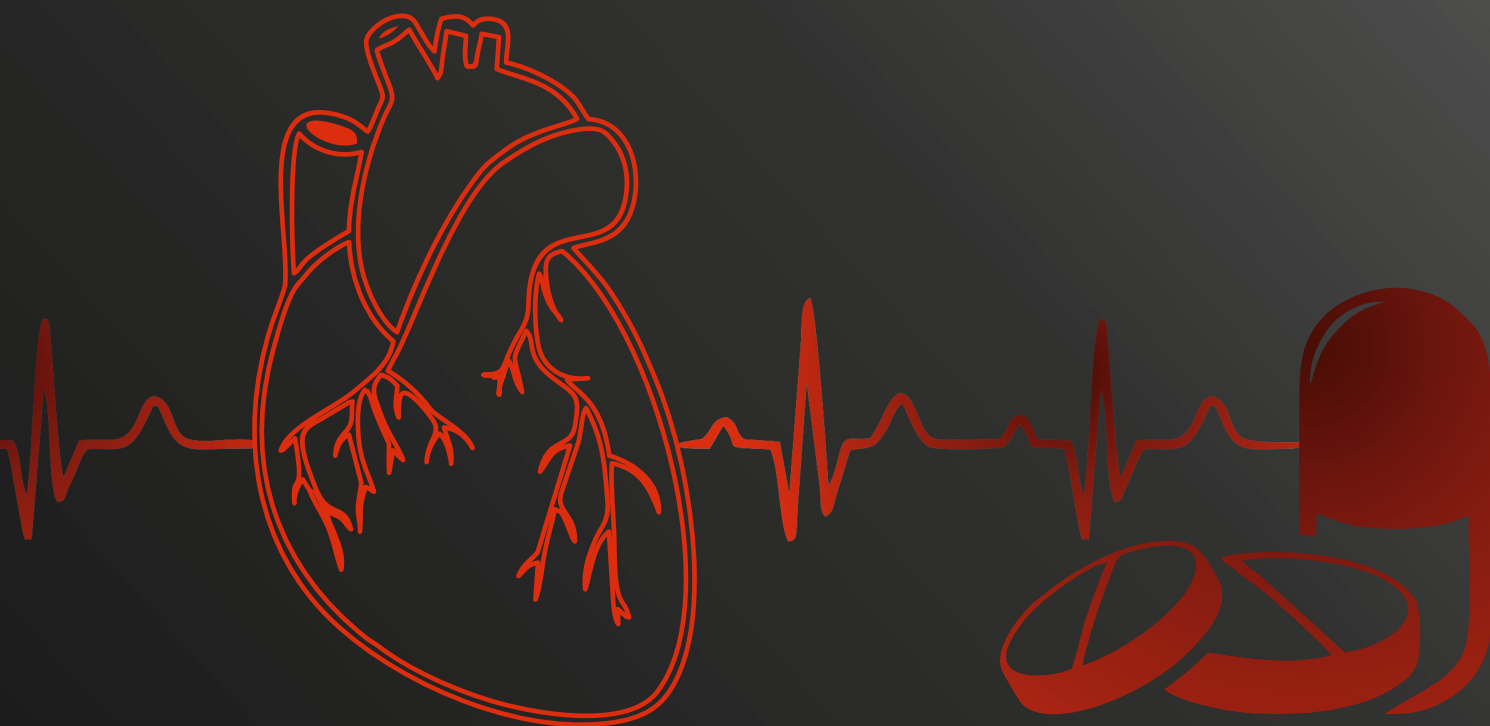


Research in Cardiovascular Medicine

Rajaie Cardiovascular Medical and Research Center

www.rcvmonline.com

Volume 6 • Issue 4 • October-December 2017



Association of Left Ventricular Global Longitudinal Strain with Exercise Capacity in Heart Failure with Preserved Ejection Fraction

Ljubica Georgievska-Ismail¹, Zarko Hristovski², Planinka Zafirovska³

¹Department of Echocardiography, University Clinic of Cardiology, Medical Faculty, University "St.Cyril and Methodius", ²Department of Cardiology, Clinical Hospital Acibadem-Sistina, ³Department of Diagnostic, Zan Mltrev Clinic, Skopje, Republic of Macedonia

Abstract

Background: Left ventricular global longitudinal strain (GLS) analysis using two-dimensional (2D) speckle-tracking echocardiography (STE) is a method for detecting subclinical systolic dysfunction. We hypothesized that exercise capacity (EC) is more closely related to systolic than diastolic dysfunction, especially to GLS in patients with heart failure and preserved ejection fraction (HFpEF). **Methods:** We assessed LV systolic and diastolic function in 172 patients with HFpEF using 2D echocardiography and STE. EC measured in units of metabolic equivalents (METs) was assessed using Bruce protocol treadmill stress testing. We defined reduced EC as <7 METs. **Results:** Out of 172 patients, 54 (31.4%) had EC of <7 METs. Patients with reduced EC of <7 METs versus those with ≥ 7 METs were significantly older ($P = 0.0001$), female ($P = 0.001$) with higher body mass index (BMI) ($P = 0.001$) and waist circumference for both men and women ($P = 0.040$, $P = 0.001$, respectively) as well as with higher resting heart rate (HR) ($P = 0.009$). Logistic regression analysis of EC as the dependent variable revealed that conventional risk factors (age, female gender, higher waist circumference, increased resting HR, and increased diastolic resting blood pressure) appeared as independent predictors of <7 METs. When age, gender, and hypertension were omitted from the analysis the results demonstrated that increased resting HR (odds ratio [OR] 1.025, $P = 0.059$, 95% confidence interval [CI] 0.997–1.192), higher BMI (OR 1.148, $P = 0.003$, 95% CI 1.047–1.258) along with elevated E/E' average ratio (OR 1.090, $P = 0.059$, 95% CI 0.997–1.192) appeared as independent predictors of <7 METs. In addition, when we included only echocardiographic variables into the logistic model, the results showed that only lower GLS% (more positive) appeared as an independent predictor of <7 METs (OR 1.111, $P = 0.044$, 95% CI 1.003–1.231). **Conclusion:** Greater impairment of GLS in patients with HFpEF appeared as a significant independent predictor of reduced EC by METs achieved.

Keywords: Exercise capacity, heart failure with preserved ejection fraction, left ventricular longitudinal strain, speckle tracking echocardiography

INTRODUCTION

Exercise intolerance is one of the main clinical features in patients with heart failure and preserved ejection fraction (HFpEF), which have a significant implication on quality of life and prognosis.^[1] Several studies using noninvasive and/or invasive methods have investigated the mechanisms of reduced exercise capacity (EC) in patients with HFpEF and concluded that there is no single responsible factor but multiple once.^[2-7] The majority of previous studies that have evaluated the association between conventional echocardiographic variables of LV systolic and diastolic function at rest and EC failed to find a relationship between LV systolic function and EC while diastolic function showed a more pronounced correlation.^[2,6,8-11] Given that

subclinical systolic dysfunction represented as reduced global longitudinal strain (GLS) has been documented in patients with HFpEF using speckle-tracking echocardiography (STE),^[12-14] we hypothesized that these patients might have reduced EC despite preserved left ventricular ejection fraction (LVEF). The aims of the present study were to evaluate the relationship

Address for correspondence: Prof. Ljubica Georgievska-Ismail, Department of echocardiography, University Clinic of Cardiology, Medical Faculty, University "St.Cyril&Methodius", St. Majka Tereza 17, 1000 Skopje, Republic of Macedonia.
E-mail: lgismail@medf.ukim.edu.mk

This is an open access article distributed under the terms of the Creative Commons Attribution-NonCommercial-ShareAlike 3.0 License, which allows others to remix, tweak, and build upon the work non-commercially, as long as the author is credited and the new creations are licensed under the identical terms.

For reprints contact: reprints@medknow.com

How to cite this article: Georgievska-Ismail L, Hristovski Z, Zafirovska P. Association of left ventricular global longitudinal strain with exercise capacity in heart failure with preserved ejection fraction. Res Cardiovasc Med 2017;6:8-13.

Access this article online

Quick Response Code:



Website:
<http://www.rcvmonline.com/>

DOI:
10.4103/rcm.rcm_28_17

between EC and conventional LV diastolic and systolic function as well GLS determined by STE echocardiography. We also sought to determine independent predictors of reduced EC in patients with HFpEF.

METHODS

Study population

This was a prospective, cross-sectional study examining 172 consecutive patients who presented with multiple atherosclerotic risk factors and were referred for cardiology assessment to either an academic cardiology clinic or a private specialist clinic in Skopje. Patients with unexplained dyspnea and/or exercise intolerance who fulfilled clinical and/or echocardiographic criteria of HFpEF presence were enrolled in the study.^[15] To be eligible for the study, patients had to have a sinus rhythm, normal lung function tests, and normal blood counts.

The Medical Ethics Committee of involved institutions approved the study protocol, and signed informed consent was obtained from all enrolled patients.

Echocardiography study

Standard assessments and calculations of LA and LV dimensions as well volumes, wall thickness, LV mass, and stroke volume (SV) were evaluated in standard views on commercially available equipment (Vivid 7, GE) according to the professional association recommendations, and were normalized to the body surface area (BSA). Mitral and pulmonary venous flow parameters using PW-Doppler were measured. Pulmonary artery systolic pressure (PASP) was estimated from tricuspid regurgitation jet. Pulse Wave-tissue Doppler imaging (PW-TDI) was performed in the apical 4-chamber view to assess annular systolic (TDIs'), early (E') and late diastolic velocities (A') at septal and lateral wall and the ratio of mitral flow E wave to E' (E/E' ratio) for each of these annular velocities as well its average value was calculated.^[16] The recording was performed at a sweep speed of 100 mm/s at end-expiratory apnea. The average of three consecutive cardiac cycles was taken for measurement of each echocardiographic index.

Left ventricular speckle tracking longitudinal strain analysis

The LV apical long, four- and two-chamber images at frame rates between 55 and 80 frames/s were used for assessing two-dimensional speckle tracking LV longitudinal strain. During breath hold, three consecutive heart cycles were recorded and averaged. Global peak systolic longitudinal strain (GLS) was derived from the average value of 17 segments [Figure 1], and each segment was analyzed individually. After the segmental tracking quality was assessed and eventually manually adjusted again, the analysis was performed using acoustic-tracking software (Echo Pac, GE, USA). To assess the reproducibility as well as the reliability of the LV strain measurements, we calculated the intraclass correlation

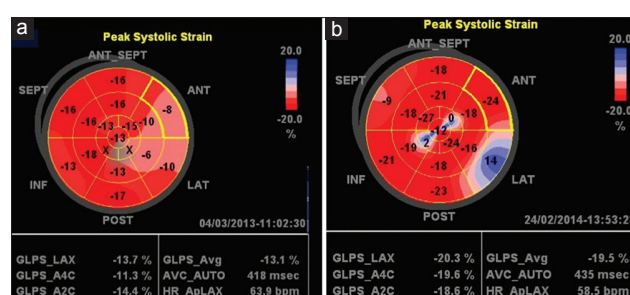


Figure 1: Global longitudinal strain (%) in patient with exercise capacity of: (a) <7 metabolic equivalents (global longitudinal strain = -13.1%, left) and (b) of ≥7 metabolic equivalents (global longitudinal strain = -19.5%, right)

coefficient (ICC) by assessing 20 randomly selected images seen in two different occasions by the same investigator. The ICC for LV longitudinal strain measurements was 0.943 (95% confidence interval 0.872–0.974).

Exercise testing

Symptom-limited exercise test using treadmill was conducted according to the Bruce protocol. Testing was terminated as a result of symptoms occurrence, achievement of maximal predicted heart rate (HR), exaggerated hypertensive or hypotensive response, severe arrhythmias, or marked ST-segment displacement. EC was measured in units of metabolic equivalents (METs). We defined reduced EC as <7 METs.

Statistical analysis

Categorical parameters were summarized as percentages and continuous parameters as a mean ± standard deviation. The difference in clinical and echocardiographic parameters between two groups was tested using Student's independent-sample *t*-test for continuous variables and Pearson's Chi-square test for categorical variables. Assessment of correlation of METs with various echocardiographic parameters was done using Pearson's correlation analysis. Multiple logistic regression analysis was performed to determine independent predictors of METs <7 presence. All data analysis was performed using SPSS version 22.0 (IBM SPSS, Inc., Chicago, Illinois, USA) and $P \leq 0.05$ was considered as statistically significant.

RESULTS

Baseline characteristics

Inclusion criteria were fulfilled by 172 patients (average age 62.0 ± 9.7 years), 68 (39.5%) men and 104 (60.5%) women with average body mass index (BMI) of 29.6 ± 4.0 kg/m² and average EC of 7.4 ± 1.7 METs. Patients had a mean New York Heart Association (NYHA) class of 1.5 ± 0.5 . According to their EC out of 172 patients, 54 (31.4%) reached <7 METs and 118 (68.6%) reached ≥7 METs on the exercise test. Baseline characteristics of the patients according to EC defined by <7 METs and ≥7 METs are shown in Table 1. Besides being significantly older, mostly women with higher BMI and with higher waist circumference, and higher NYHA class, patients

Table 1: Basal parameters in patients with heart failure and preserved ejection fraction compared according to reached metabolic equivalents on exercise testing

Parameters	<7 METs (n=58)	≥7 METs (n=127)	P*
Age (years)	64.6±9.9	60.8±9.5	0.017
Women, n (%)	42 (77.8)	62 (52.5)	0.001
BMI (kg/m ²)	31.0±4.4	28.9±3.5	0.001
Waist circumference (cm)			
Man	109.2±11.3	103.5±7.8	0.040
Women	104.2±9.6	98.0±8.5	0.001
Smokers, n (%)	10 (18.5)	31 (26.3)	0.181
Hypertension, n (%)	54 (100)	112 (94.9)	0.100
Dyslipidemia, n (%)	52 (96.3)	113 (95.8)	0.616
DM, n (%)	32 (59.3)	55 (46.6)	0.084
CAD, n (%)	12 (20.2)	18 (15.3)	0.183
NYHA	1.7±0.4	1.4±0.4	0.0001
Medication, n (%)			
ACE inhibitor	40 (75.5)	76 (64.4)	0.092
ARB	10 (18.9)	24 (20.3)	0.500
Beta blocker	27 (50.9)	61 (51.7)	0.529
CCB	20 (37.7)	391 (33.1)	0.335
Diuretic	29 (54.7)	57 (48.3)	0.271
HR (Imp/min)	87.3±16.9	80.9±13.6	0.009
BP systolic (mmHg)	152.3±19.7	140.5±18.4	0.0001
BP diastolic (mmHg)	91.6±9.5	86.2±7.8	0.0001

*P<0.05 comparison among groups. ARB: Angiotensin receptor blocker, BMI: Body mass index, BP: Blood pressure, CAD: Coronary artery disease, CCB: Calcium channel blocker, DM: Diabetes mellitus, HR: Heart rate, NYHA: New York Heart Association class, METs: Metabolic equivalents, ACE: Angiotensin converting enzyme

who reached <7 METs did not show any statistical significant difference regarding atherosclerotic risk factors, coronary artery disease presence and/or used medications except for diabetes which was more frequently present in patients with <7 METs, a result that was borderline significant. Resting HR and blood pressure were significantly increased were in patients with <7 METs. Lower METs reached during exercise showed significant association with advanced age, female gender, higher BMI and waist circumference, hypertension and diabetes presence, higher NYHA class, increased resting HR and systolic and diastolic BP, shown in Table 2.

Echocardiographic study

Although patients with METs <7 compared to those with ≥7 METs had insignificantly lower LV diameters and volumes in diastole as well as in systole, almost identical septal and posterior wall thickness, higher LV mass index no matter of the gender, and higher LVEF [Table 3], lower internal dimensions and volumes and higher LVEF showed significant association with decreased METs [Table 2]. Relative wall thickness (RWT) was in favor of concentric LV hypertrophy without significant difference between the two groups of patients. SV/BSA and TDI_s' in patients with METs <7 were lower [Table 3] as well lower SV/BSA was with borderline significantly associated with lower METs [Table 2]. The LA

Table 2: Significant correlations of metabolic equivalents with clinical and echocardiographic parameters in patients with heart failure and preserved ejection fraction (n=172)

Parameters	METs	
	r	P*
Age (years)	-0.363	0.0001
Female gender (%)	-0.423	0.0001
BMI (kg/m ²)	-0.188	0.014
Waist circumference (cm)	-0.202	0.008
Hypertension presence (%)	-0.179	0.010
Diabetes presence (%)	-0.215	0.004
NYHA class	-0.409	0.0001
Resting HR	-0.202	0.008
Systolic resting BP	-0.327	0.0001
Diastolic resting BP	-0.271	0.0001
LVEDD (mm)	0.238	0.002
LVEDS (mm)	0.242	0.001
EDV/BSA (ml/m ²)	0.254	0.001
ESV/BSA (ml/m ²)	0.238	0.002
LVEF (%)	-0.212	0.005
SV/BSA (ml/min/m ²)	0.137	0.073
LVTMI (g/m ²)	0.158	0.039
E' velocity (cm/s)	0.185	0.015
E' average velocity (cm/s)	0.174	0.022
E/E' ratio	-0.221	0.004
E/E'L ratio	-0.147	0.054
E/E' average ratio	-0.210	0.006
GLS (%)	-0.135	0.078
GLS <15% (%)	-0.146	0.055

*P<0.05 comparison between groups; r: Pearson's correlation coefficient.

BP: Blood pressure, BSA: Body surface area, E velocity: Early mitral inflow velocity, E' velocity: Early diastolic mitral annular tissue Doppler velocity, EDV: End-diastolic volume, ESV: End-systolic volume, EF: Ejection fraction, GLS: Global longitudinal strain, HR: Heart rate, L: Lateral, LV: Left ventricle, LVEDD: Left ventricular end-diastolic dimension, LVEDS: Left ventricular end-systolic dimension, LVTMI: Left ventricular mass normalized by BSA, S: Septal, SV: Systolic volume

internal dimension and its' indexed value in patients with METs <7 [Table 3] were above normal, but almost identical in both groups. LAVI was insignificantly higher, and LAEF% was insignificantly lower in patients with METs <7 [Table 3]. As for diastolic parameters [Table 3], comparison of conventional transmitral inflow parameters, pulmonary artery flow parameters, and PASP among patients divided according to METs showed the absence of significant differences among groups. E' and E/E' ratio regardless of the level at which they were assessed were insignificantly lower or larger in patients with METs <7 in comparison to those with ≥7 METs. Lower E' at either the septal level or taken as an average along with higher E/E' ratio measured at the same levels showed a significant association with decreased METs [Table 2].

Left ventricular strain measurements

GLS derived from the average value of 17 segments was as expected lower than normal in patients with HFpEF [Table 3] and was significantly lower (more positive) as well as was

Table 3: Systolic, diastolic and left ventricle strain echocardiographic parameters in patients compared according to reached metabolic equivalents on exercise testing

Parameters	<7 METs (n=58)	≥7 METs (n=127)	P*
LVEDD (mm)	48.6±5.8	49.2±5.5	0.497
LVEDS (mm)	27.5±5.2	28.3±5.7	0.362
EDV/BSA (ml/m ²)	44.0±13.0	45.8±10.9	0.366
ESV/BSA (ml/m ²)	15.2±6.2	15.8±5.5	0.428
SWT (mm)	14.1±1.9	14.0±1.8	0.861
PWT (mm)	12.0±2.0	11.9±2.0	0.853
LVM/BSA (g/m ²)			
Man	153.2±30.1	146.9±28.7	0.503
Women	126.9±25.6	122.6±24.8	0.400
RWT	0.50±0.11	0.49±0.10	0.560
LVEF (%)	67.2±6.9	65.4±6.8	0.106
SV/BSA (ml/min/m ²)	36.5±9.3	39.9±11.0	0.050
TDIs' average (cm/s)	6.0±1.3	6.1±1.1	0.054
LA (mm)	40.9±2.9	40.9±4.8	0.955
LA/BSA (mm/m ²)	21.4±2.4	21.3±2.5	0.733
LAVI (ml/m ²)	39.7±11.8	38.0±9.3	0.312
LAEFI (%/m ²)	21.8±6.2	22.2±5.4	0.679
E/A ratio	0.9±0.3	0.9±0.2	0.785
DT (ms)	212.8±56.2	206.0±46.1	0.405
IVRT (ms)	104.2±25.5	103.5±24.0	0.869
Ar-A ≥30 ms, n (%)	7 (13.0)	8 (6.8)	0.149
PASP (mmHg)	15.8±12.1	14.7±9.6	0.615
E'S velocity (cm/s)	5.2±1.3	5.3±1.2	0.652
E'L velocity (cm/s)	6.7±1.7	6.9±1.5	0.503
E' average velocity (cm/s)	6.0±1.3	6.1±1.1	0.489
E/E's ratio	15.7±4.5	14.8±4.0	0.199
E/E'L ratio	12.6±5.8	11.4±3.1	0.113
E/E' average ratio	14.1±4.8	13.1±3.1	0.096
GLS (%)	-16.5±3.6	-17.6±2.9	0.040
GLS <15%, n (%)	19 (35.2)	25 (21.2)	0.040

*P<0.05 comparison between groups. A velocity: Late diastolic mitral inflow velocity, Ar: Pulmonary venous atrial flow reversal velocity, BSA: Body surface area, DT: Deceleration time, E velocity: Early mitral inflow velocity, E': Early diastolic mitral annular tissue Doppler velocity, EDV: End-diastolic volume, ESV: End-systolic volume, GLS: Global longitudinal strain; L: Lateral, EF: Ejection fraction, IVRT: Isovolumetric relaxation time, LA: Left atrial diameter, LAVI: Maximum left atrial volume normalized by BSA, LV: Left ventricle, LVEDD: Left ventricular end-diastolic dimension, LVEDS: Left ventricular end-systolic dimension, LVMI: Left ventricular mass normalized by BSA, PASP: Pulmonary artery systolic pressure, PWT: Posterior wall thickness, RWT: Relative wall thickness, S: Septal, SWT: Septal wall thickness, SV: Systolic volume, TDIs': Systolic mitral annular tissue Doppler velocity, LVEF: LV ejection fraction, METs: Metabolic equivalents, LAEFI: Left atrial ejection fraction normalized by BSA

higher percent of patients with GLS of <15% in patients with <7 METs in comparison to those with ≥7 METs. Reduced GLS and higher percent of patients with GLS of <15% were with borderline significance associated with lower METs [Table 2].

Predictive variables of reduced metabolic equivalents

We performed binary logistic regression analysis with <7 METs as the dependent variable and clinical, functional, and

echocardiographic variables that showed significant association with reduced METs taken as independent variables. The results [Model 1, Table 4] demonstrated that increased resting HR and diastolic BP, advanced age, female gender and higher waist circumference appeared as independent predictors of <7 METs. Taking into account that advanced age, gender, and hypertension are well-known as factors that usually limit EC, we excluded them and performed another logistic regression analysis. The results demonstrated [Model 2, Table 4] that increased HR at rest, higher BMI along with elevated E/E' ratio measured as average appeared as independent predictors of <7 METs. When we put into the logistic model only echocardiographic variables [Model 3, Table 4] the results showed that only lower GLS% (more positive) appeared as independent predictor of <7 METs.

DISCUSSION

Baseline characteristics

Analysis of the baseline characteristics of 172 patients with HFpEF, divided according to EC measured by METs, showed that patients who reached <7 METs were significantly older, mostly women with higher BMI and waist circumference as well as with higher NYHA class. Advanced age, female gender, higher waist circumference, and hypertension appeared as significant independent clinical predictors of reduced EC represented as <7 METs. These results are consistent with the results of numerous studies^[1,3-9] who showed reduced EC (assessed by peak VO₂ or METs) in predominantly older, obese, diabetic, and hypertensive women and concluded that it was not only due to reduced inotropic, contractile, vasodilator, and chronotropic reserve but also to reduction in skeletal muscle mass. Haykowsky *et al.*^[6] confirmed that finding that A-VO₂ difference reserve is an independent predictor of peak VO₂ suggest that peripheral, noncardiac factors are important contributors to exercise intolerance in the elderly with HFpEF. As for the female gender, it has been speculated that lower EC could be due to a greater amount of adipose tissue, lower levels of hemoglobin and lower body size, or muscle mass.^[7,8] In addition, consistent with our study, it has been found that increasing BMI and/or waist circumference appeared as significant contributing factors of reduced EC which could be due to specific derangement in cardiac function or rather as a comorbid condition that further limits EC in patients.^[7,16] Meyer *et al.*^[17] similar to our study have found that patients with reduced EC have higher resting HR that could reduce cardiac output reserve and with possible chronotropic incompetence might reduce EC.

Left ventricular systolic and diastolic parameters and exercise capacity

The current findings were in line with other studies showing a direct relationship between reduced EC and smaller LV cavity size and indexed LV volumes along with increased wall thickness and LV mass index, suggesting that such characteristics were result of adaptive process

Table 4: Logistic regression analysis of independent predictors of exercise capacity measured by metabolic equivalents

Parameters	B	Wald	Significant	Exp(B)	95% CI of Exp (B)
Model 1: Clinical, functional, and echocardiographic variables					
HR (imp/min)	0.035	5.948	0.015	1.035	1.007-1.065
BP diastole (mmHg)	0.078	9.395	0.012	1.081	1.029-1.137
Age (years)	0.072	9.542	0.002	1.075	1.027-1.125
Female gender	1.375	9.642	0.002	3.957	1.661-9.426
Waist circumference (cm)	0.064	7.074	0.008	1.066	1.017-1.117
Model 2: Clinical, functional, and echocardiographic variables					
E/E' average	0.086	3.368	0.059	1.090	0.997-1.192
HR (Imp/min)	0.025	4.387	0.036	1.025	1.002-1.049
BMI (kg/m ²)	0.138	8.664	0.003	1.148	1.047-1.258
Model 3: Echocardiographic variables					
GLS (%)	0.105	4.060	0.044	1.111	1.003-1.231

CI: Confidence interval, BP: Blood pressure, BMI: Body mass index, GLS: Global longitudinal strain, HR: Heart rate, E velocity: Early mitral inflow velocity, E' velocity: Early diastolic mitral annular tissue Doppler velocity

of which hypertension-induced concentric LV remodeling appears to play an important role.^[4,9,17] Lam *et al.*^[18] used symptom-limited treadmill exercise in patients with different kind of LV hypertrophy and remodeling and found that EC assessed by METs was the lowest in patients with concentric hypertrophy, LV mass index and RWT being significantly negatively associated with exercise tolerance which was related to reduced systolic and chronotropic reserve. They speculated that “occult” systolic dysfunction may be present at rest in concentric hypertrophy, despite preserved LVEF and chamber contractility, and that this systolic dysfunction becomes apparent with exercise. Furthermore, the results of our study showed that SV/BSA was lower in patients with reduced EC which was confirmed in a few studies.^[4,7] Given that SV is generated by changes in chamber volume throughout the cardiac cycle, smaller cavity size is generally associated with a smaller SV. At rest, the reduced SV/BSA appears to be compensated by an increase in resting HR, but both of them could have impact toward reduced EC.^[7,17] Conversely, assessment of LV diastolic function in our study, showed the absence of significant differences between patients divided according to EC. However, lower E' along with higher E/E' ratio measured at either the septal level or taken as average showed a significant association with decreased METs, higher E/E' average ratio being an independent predictor of <7 METs which was in accordance to the results of numerous studies.^[4,5,8-11] In this respect, Skaluba and Litwin^[19] found that among all the echocardiographic and clinical parameters assessed, E/E' ratio had the best correlation with EC and was the strongest independent predictor of EC ≤7 METs regardless of age and/or preserved or reduced systolic function. Furthermore, Otto *et al.*^[20] in a study of patients with preserved LVEF found that significant number of those who had E/E' ratio >10 had limited EC manifested with <7 METs. In the considerable number of patients with preserved LVEF, Grewal *et al.*^[8] showed that patients with LV filling pressure measured by resting E/E' ratio ≥15 had a progressive increase in the magnitude of reduction in EC with advancing age and also concluded that abnormalities of LV diastolic function were

independently associated with EC in METs. The speculation of possible pathophysiological mechanisms behind reduced EC and diastolic dysfunction, Gupte and Hamilton^[21] tried to illuminate citing several studies that found extensive stiffness in LV of patients with HFpEF which prevents the increase in LV end-diastolic volume, thus lead to limited ability to use the Frank-Starling mechanisms despite greater filling pressure and also limits augmentation of relaxation velocity during exercise as HR increases.

Left ventricular strain measurements and exercise capacity

In line with previous observations, we found that global longitudinal LV strain (GLS%) was lower than normal in all studied patients with HFpEF.^[12-14] Furthermore, we found significantly lower (more positive) GLS% and higher percent of patients with GLS <15% present in those with <7 METs achieved during exercise. Lower GLS% (more positive) appeared as an independent predictor of <7 METs in the logistic model taking into account only echocardiographic variables. Given that patients with HFpEF have preserved systolic reserve during exercise, exercise-induced stress could “unmask” mild deficits in the systolic function represented with changes in LV myocardial deformation.^[18] Thus, Tan *et al.*^[12] studied LV mechanics in patients with HFpEF at rest and on submaximal exercise and found that HFpEF patients had reduced diastolic longitudinal functional reserve which lead to consequent reduced SV rise on exercise, symptoms of breathlessness and lower functional capacity at rest and even more with exercise. Henein *et al.*^[22] confirmed that HFpEF patients despite preserved LVEF at rest have abnormal systolic function reserve limiting their EC. In addition, Hasselberg *et al.*^[23] examined the EC by oxygen uptake (VO₂) in patients with preserved and failing LVEF along with assessment of LV systolic and diastolic function as well GLS% by echocardiography. Patients with HFpEF had reduced GLS% at rest which was independently correlated to peak VO₂ and was superior in identifying patients with reduced EC.

Limitation of the study

We used calculated METs rather than oxygen consumption as a measure of EC. Although the latter is more frequently used in numerous studies, calculation of achieved METs is a widely accepted clinical tool for determining functional capacity and it has strong prognostic value. Furthermore, the important limitation of our study was that assessment of LV systolic and diastolic function were made only at rest, while well-known principle of exercise physiology is that definitive conclusion regarding mechanisms of exercise intolerance is better to be made during exercise. Furthermore, the study was predominantly focused on the role of LV systolic and diastolic dysfunction on EC, not evaluating peripheral abnormalities and/or chronotropic incompetence.

CONCLUSION

Patients with HFpEF have subclinical LV systolic dysfunction which presents as impaired GLS using STE despite preserved LVEF. Besides conventional risk factors (age, gender, BMI, hypertension) which appeared as independent clinical and functional predictors of reduced EC, increased E/E' ratio and GLS appeared as independent echocardiographic predictors of reduced EC by METs achieved. Thus, our study confirms that along with diastolic dysfunction, GLS appeared as an independent predictor of reduced EC emphasizing the complex pathophysiological nature of HFpEF. In addition, we can suggest that LV longitudinal function assessed by STE should be an inevitable part of the diagnostic and/or prognostic workup of patients with HFpEF.

Financial support and sponsorship

Nil.

Conflicts of interest

There are no conflicts of interest.

REFERENCES

- Borlaug BA, Olson TP, Lam CS, Flood KS, Lerman A, Johnson BD, *et al.* Global cardiovascular reserve dysfunction in heart failure with preserved ejection fraction. *J Am Coll Cardiol* 2010;56:845-54.
- Kitzman DW, Higginbotham MB, Cobb FR, Sheikh KH, Sullivan MJ. Exercise intolerance in patients with heart failure and preserved left ventricular systolic function: Failure of the Frank-Starling mechanism. *J Am Coll Cardiol* 1991;17:1065-72.
- Borlaug BA, Melenovsky V, Russell SD, Kessler K, Pacak K, Becker LC, *et al.* Impaired chronotropic and vasodilator reserves limit exercise capacity in patients with heart failure and a preserved ejection fraction. *Circulation* 2006;114:2138-47.
- Maeder MT, Thompson BR, Brunner-La Rocca HP, Kaye DM. Hemodynamic basis of exercise limitation in patients with heart failure and normal ejection fraction. *J Am Coll Cardiol* 2010;56:855-63.
- Westermann D, Kasner M, Steendijk P, Spillmann F, Riad A, Weitmann K, *et al.* Role of left ventricular stiffness in heart failure with normal ejection fraction. *Circulation* 2008;117:2051-60.
- Haykowsky MJ, Brubaker PH, John JM, Stewart KP, Morgan TM, Kitman DW, *et al.* Determinants of exercise intolerance in elderly heart failure patients with preserved ejection fraction. *J Am Coll Cardiol* 2011;58:265-74.
- Upadhyaya B, Haykowsky MJ, Eggebeen J, Kitman DW. Exercise intolerance in heart failure with preserved ejection fraction: More than a heart problem. *J Geriatr Cardiol* 2015;12:294-304.
- Grewal J, McCully RB, Kane GC, Lam C, Pelikka PA. Left ventricular function and exercise capacity. *JAMA* 2009;301:286-94.
- Mohammed SF, Borlaug BA, McNulty S, Lewis GD, Lin G, Zakeri R, *et al.* Resting ventricular-vascular function and exercise capacity in heart failure with preserved ejection fraction: A RELAX trial ancillary study. *Circ Heart Fail* 2014;7:580-9.
- Sinning D, Kasner M, Westermann D, Schulze K, Schultheiss HP, Tschöpe C, *et al.* Increased left ventricular stiffness impairs exercise capacity in patients with heart failure symptoms despite normal left ventricular ejection fraction. *Cardiol Res Pract* 2011;2011:692862.
- Kasner M, Sinning D, Lober J, Post H, Fraser AG, Pieske B, *et al.* Heterogeneous responses of systolic and diastolic left ventricular function to exercise in patients with heart failure and preserved ejection fraction. *ESC Heart Fail* 2015;2:121-32.
- Tan YT, Wenzelburger F, Lee E, Heatlie G, Leyva F, Patel K, *et al.* The pathophysiology of heart failure with normal ejection fraction: Exercise echocardiography reveals complex abnormalities of both systolic and diastolic ventricular function involving torsion, untwist, and longitudinal motion. *J Am Coll Cardiol* 2009;54:36-46.
- Yip GW, Zhang Q, Xie JM, Liang YJ, Liu YM, Yan B, *et al.* Resting global and regional left ventricular contractility in patients with heart failure and normal ejection fraction: Insights from speckle-tracking echocardiography. *Heart* 2011;97:287-94.
- Kraigher-Krainer E, Shah AM, Gupta DK, Santos A, Claggett B, Pieske B, *et al.* Impaired systolic function by strain imaging in heart failure with preserved ejection fraction. *J Am Coll Cardiol* 2014;63:447-56.
- Paulus WJ, Tschöpe C, Sanderson JE, Rusconi C, Flachskampf FA, Rademakers FE, *et al.* How to diagnose diastolic heart failure: A consensus statement on the diagnosis of heart failure with normal left ventricular ejection fraction by the Heart Failure and Echocardiography Associations of the European Society of Cardiology. *Eur Heart J* 2007;28:2539-50.
- Bello NA, Cheng S, Claggett B, Shah AM, Ndumele CE, Roca GQ, *et al.* Association of weight and body composition on cardiac structure and function in the ARIC Study (Atherosclerosis Risk in Communities). *Circ Heart Fail* 2016;9: pii: e002978.
- Meyer M, McEntee RK, Nyotwidjojo I, Chu G, LeWinter MM. Relationship of exercise capacity and left ventricular dimensions in patients with a normal ejection fraction. An exploratory study. *PLoS One* 2015;10:e0119432.
- Lam CS, Grewal J, Borlaug BA, Ommen SR, Kane GC, McCully RB, *et al.* Size, shape, and stamina: The impact of left ventricular geometry on exercise capacity. *Hypertension* 2010;55:1143-9.
- Skaluba SJ, Litwin SE. Mechanisms of exercise intolerance: Insights from tissue Doppler imaging. *Circulation* 2004;109:972-7.
- Otto ME, Pereira MM, Beck AL, Milani M. Correlation between diastolic function and maximal exercise capacity on exercise test. *Arq Bras Cardiol* 2011;96:107-13.
- Gupte AA, Hamilton DJ. Exercise intolerance in heart failure with preserved ejection fraction. *Methodist Debakey Cardiovasc J* 2016;12:105-9.
- Henein M, Mömer S, Lindmark K, Lindqvist P. Impaired left ventricular systolic function reserve limits cardiac output and exercise capacity in HFpEF patients due to systemic hypertension. *Int J Cardiol* 2013;168:1088-93.
- Hasselberg NE, Haugaa KH, Sarvari SI, Gullestad L, Andreassen AK, Smiseth OA, *et al.* Left ventricular global longitudinal strain is associated with exercise capacity in failing hearts with preserved and reduced ejection fraction. *Eur Heart J Cardiovasc Imaging* 2015;16:217-24.