

-

o you by

[Browse Posters](#) » [Search result](#) » [Poster ESSR 2012 / P-0065](#)

POSTER SECTIONS

[Coverpage](#)

[Purpose](#)

[Methods and Materials](#)

[Results](#)

[Conclusion](#)

[References](#)

[Personal Information](#)



ESSR 2012 / P-0065

Imaging features of aneurismal bone cysts

This poster was originally presented at the ESSR 2012 meeting, June 28-30, in Innsbruck/AT. www.essr.org

Congress:

ESSR 2012

Poster Number:

P-0065

Type:

Scientific Exhibit

Keywords:

Perception image, Conventional radiography, MR, CT, Musculoskeletal bone, Cysts

Authors:

V. Vasilevska Nikodinovska¹, E. Jordanoska¹, I. Nevcev², G. Spirov¹, M. Samargiski¹, S. Kostadinovska Kunoska¹, V. Janevska¹; ¹Skopje/MK, ²Kavadarci/MK

DOI:

10.1594/essr2012/P-0065

DOI-Link:

<https://dx.doi.org/10.1594/essr2012/P-0065>

Purpose

To analyze different imaging presentations of primary aneurismal bone cyst.

[Read more](#)

Methods and Materials

Retrospectively, images from 52 histologically proven primary aneurismal bone cysts were analyzed. Male were 30 and 22 female, age range 5-35 years (median age 18 years). All of them have plain film, computed tomography was done in 40 cases and magnetic resonance in 22 cases. Classification after Capanna in five morphological types was done.

[Read more](#)

Results

Type 1: central with little expansion 10 (19.2%) cases; Type 2: central with expansion and cortical thinning 13 (25%) cases; Type 3: eccentric with involvement of only one cortex 19 (36.5%) cases; Type 4: subperiosteal extending "outwards" with intact or only superficially eroded cortex 3 (5.8%) cases; (Fig.1-8) Type 5: subperiosteal with growth both outwards and centrally towards the medulla, with cortical destruction 7 (13.5%) cases. Size range of the lesions was 4 mm to 12 cm.

[Read more](#)

Conclusion

The primary aneurismal bone cysts has specific radiological features that should enable the radiologist to make the diagnosis with high degree of certainty.

[Read more](#)

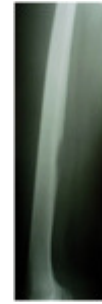


Fig. 1: Plain film; Type 4: subperiosteal ABC only superficially eroded cortex

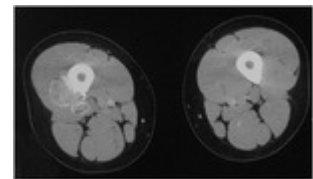


Fig. 3: CT; Type 4: subperiosteal extending "outwards" with only superficially...

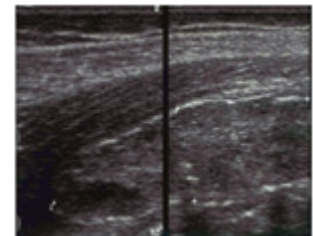


Fig. 2: US; Type 4: subperiosteal extending "outwards" with superficially eroded...

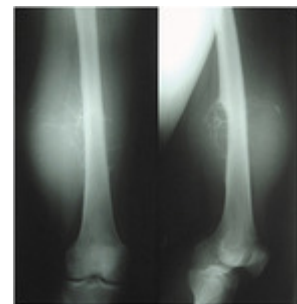


Fig. 5: Plain film; aggressiveness of the same lesion after 2 months; still Type 4:...

References

1. Mahnken A.H, Nolte-Ernsting C.C, Wildberger J.E, et al. Aneurysmal bone cyst: value of MR imaging and conventional radiography. Eur Radiol (2003) 13:1118-1124
2. Maiya S, Davies AM, Evans N, Grimer R.J. Surface aneurysmal bone cyst: pictorial review. Eur Radiol (2002) 12:99-108
3. James L.J, Davies A.M. Surface lesions of the bones of the hand. Eur Radiol (2006) 16: 108-123
4. Capanna R, Bettelli G, Biagini P et al. Aneurysmal bone cysts of long bones. Ital J Orthop traumatol (1985) 11:409-417
5. Vergel de Dios, Bond J, Shives T et...

[Read more](#)

Personal Information

[Read more](#)

[Home](#) | [Browse posters](#) | [Help](#) | [Privacy policy](#) | [Disclaimer](#) | [Contact](#) | [myESR](#)

© 2003-2022 ESR - European Society of Radiology

ESR EUROPEAN SOCIETY
OF RADIOLOGY