

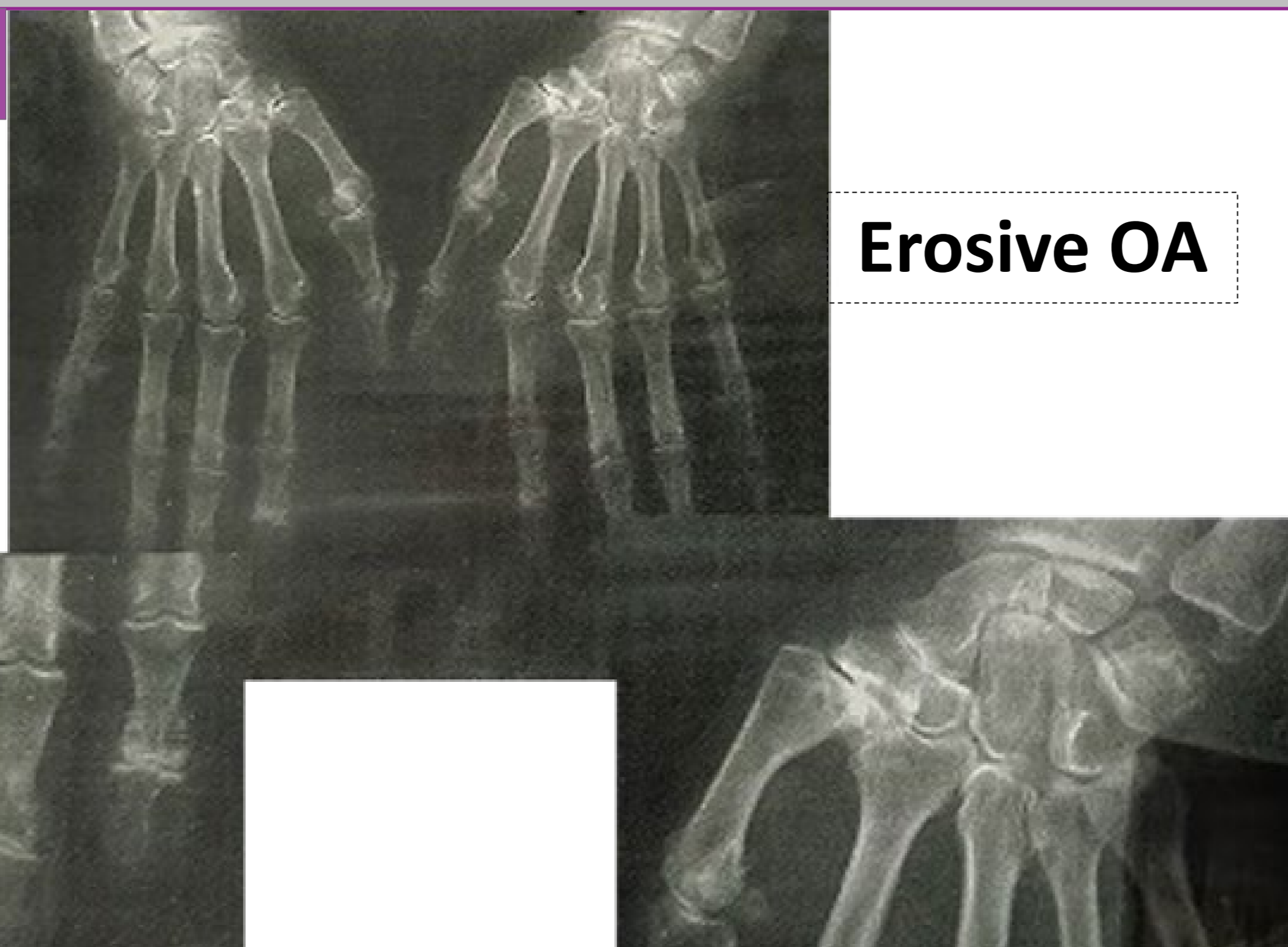
RADIOLOGIC DIFFERENCE BETWEEN ARTROSIS, EROSIV OSTEOARTRITIS AND ARTRITIS OF THE HANDS

AUTHORS: Smiljana Bundovska-Kocev, Ealizabetha Stefanovska, Gordana Antuleska-Belceska, Menka Lazareska, Sonja Nikolova, Ivanka Karagjozova; Skopje/MK

Introduction/Purpose

OA is defined as non-inflammatory disease with cartilage damage only and formation of a new bone tissue on the damaged surface and joints. RA is chronic, systematic and articular disease with still unknown etiology.

To define the radiological signs of RA and to compare them with progressed erosive changes of the hands.



Materials and methods

56 patients are assessed, 24 patients with RA (mean age 42,5 years) and lasting of the deses of 2,7 years, and also 32 patients with OA (mean age of 69,8 years) and lasting of the disease for 4,3 years. The patients were treated in the University Rheumatology Clinic Skopje. In all of them were done clinical and biochemical examinations.

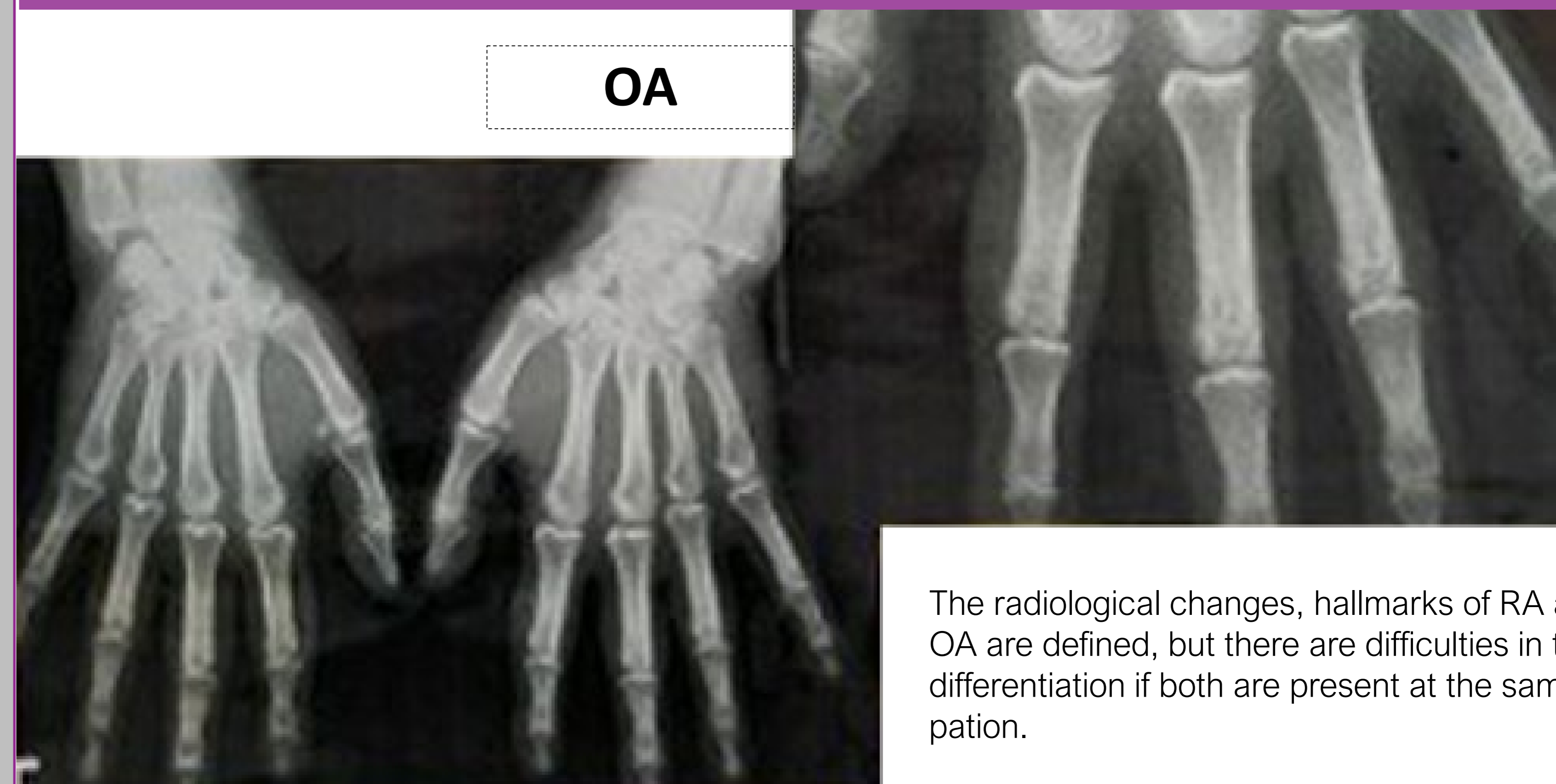


Results

Hand x-ray analysis of the examined patients showed clear radiological o between the two examined groups. The group with RA was characterized with symmetric joint space narrowing in 60%, juxta-articular osteopenia in 98%, subchondral and subcortical cysts without surrounding sclerosis in 42%. Joint erosions were noted in 9%, subluxations and laxation's in 7%, partial and complete was noted in 5%. The group with OA was characterized with typical changes of the distal interphalangeal joints and less noted osteophytes and cysts with sclerosis on the proximal interphalangeal joints.



Conclusion



The radiological changes, hallmarks of RA and OA are defined, but there are difficulties in the differentiation if both are present at the same patien.